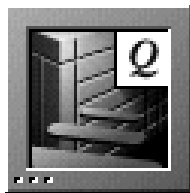
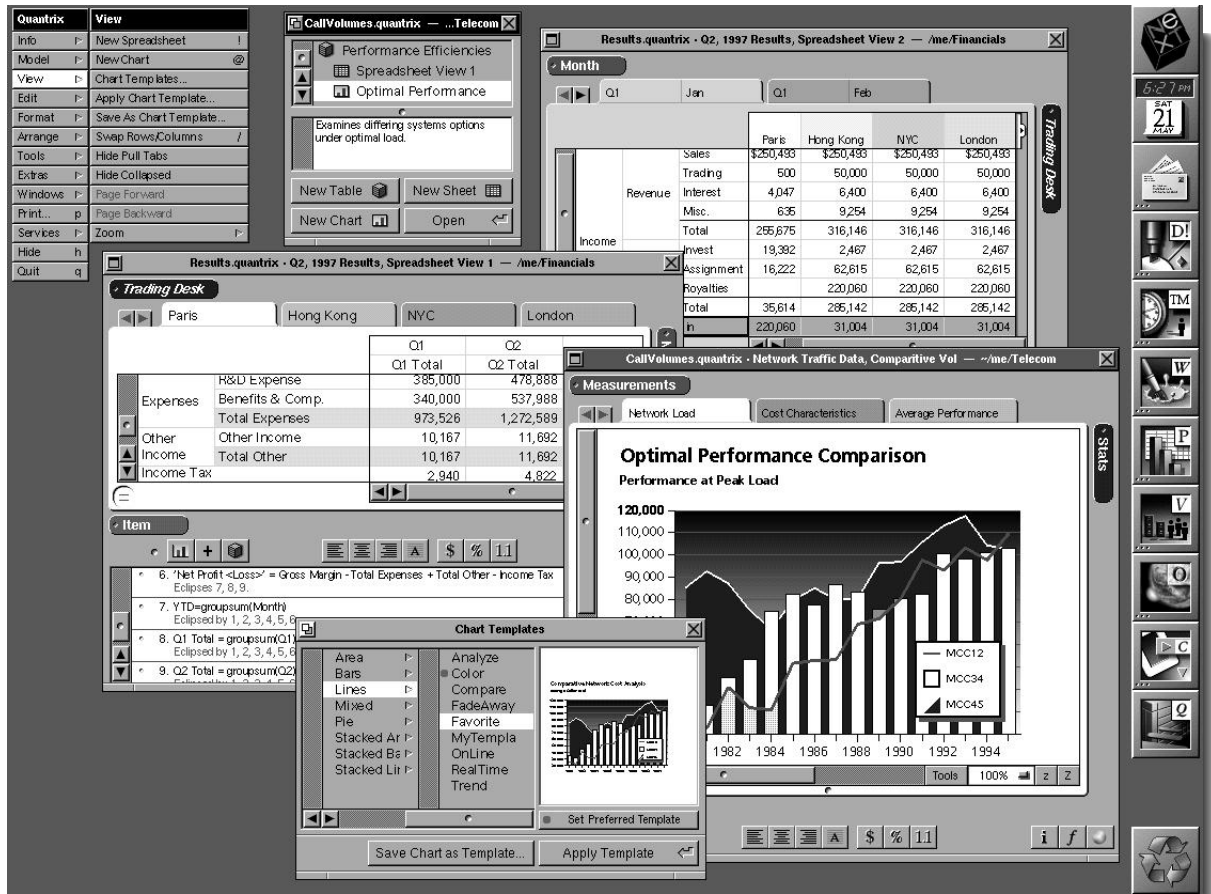


# QUANTRIX



**Lighthouse Design's Quantrix** is a multi-dimensional spreadsheet and analytical framework for NEXTSTEP and OpenStep applications. For enterprises driven by spreadsheets—from budgets and forecasts to custom applications based on spreadsheet views and charts—Quantrix offers a significant competitive edge.

Through a robust and object-oriented application programmer's interface (API), Quantrix provides a reusable analytical and graphical framework for data driven applications—from decision support to derivatives trading. Along with support for real-time data feeds, loadable bundles, and an extensible library of proprietary functions, Quantrix embodies the benefits of objects.

Quantrix data is organized into *categories* and *items*, which are defined by formulas that refer to plain English names. This approach eliminates cryptic cell references that characterize most traditional spreadsheets, so "C3:C15 = A1:A15 \* \$B\$3" becomes "Revenues = Units Sold \* Selling Price." Visualize different dimensions of your data by simply dragging and dropping category tiles. With Quantrix, you can turn a 1996 budget into a 5-year plan, or a single stock analysis into a portfolio model with a simple keystroke, and no additional formulas!

Complemented by a powerful graphics engine, support for multiple views of the same set of data, and compatibility with other major spreadsheet applications, Quantrix offers a remarkable advantage as both a spreadsheet object and desktop application.

*Quantrix is an innovative multi-dimensional spreadsheet and framework for custom application developers. With an open API, plain English formulas, real-time support and a powerful graphics engine, Quantrix offers a remarkable advantage as both a desktop application and spreadsheet object.*

*Lighthouse*  
DESIGN LTD

# QUANTRIX

## FEATURES AND BENEFITS

---

### MODELS, TABLES, AND VIEWS

- Quantrix models can contain an unlimited number of tables and views, organized and accessed through a *table browser*
- A single table can have multiple *views* onto its data, each with individual formatting and arrangement of data
- Spreadsheet data is described, managed and manipulated through *categories*—no longer are users confined to rows and columns
- Categories can be reorganized by simply dragging and dropping the tiles that represent them—formulas are automatically maintained
- File tabs allow data dimensions to be navigated and browsed with a simple mouse click

---

### FUNCTIONS AND FORMULAS

- Plain English formulas (“Market Penetration = Total Units / Total Market”) make creating, modifying and maintaining spreadsheet models fast and easy
- Support for inter-table linking allows cells in one table to reference other tables
- Color tags highlight recently changed numbers, convenient for real-time applications tracking the stock market, for example
- Support for auto-reducing fractions
- Full support for unlimited Undo and Redo of all operations
- Includes an extensive array of sophisticated mathematical, statistical, logical and accounting functions

---

### FOR CUSTOM APPLICATION DEVELOPERS

- Object-oriented API lets developers of mission-critical NEXTSTEP and OpenStep applications leverage the Quantrix calculation and charting engines—eliminating the need to write or create custom reporting and charting objects
- API allows full programmatic access to data entry, formula creation, editing, spreadsheet formatting, output, charting and data manipulation
- Expandable function library allows developers to augment the application with proprietary algorithms (e.g., risk management)
- Support for loadable bundles allows developers to embed complete stand-alone applications within Quantrix at runtime—making an ideal platform for prototyping or deploying custom applications

---

### USER INTERFACE

- Button ribbons provide fast and convenient access to inspectors, panels and frequently accessed formatting commands
- Drag and drop linking allows spreadsheet data to be dynamically associated with other applications (includes support for NEXTSTEP 3.0 Object Links)
- Graphical *pull tabs* make it simple to add items to your spreadsheet—just grab a tab and drag it with your mouse

---

### CHARTING & GRAPHICS

- Support for multiple dynamic charts including: bar, pie, line, area, stacked, scatter, and HiLo types
- Charting specific data segments is simple—just select the items you want to visualize and click a button
- Full control over chart color, label, display and legend type; axis scaling, rotation, markup, and much more
- Full support for a wide variety of graphics, as well as copy/paste of spreadsheet area as Encapsulated PostScript (EPS) or TIFF graphics
- Dozens of chart templates come bundled with Quantrix for stunning presentations

---

### FORMATTING

- Fine control over data types and “smart cells” take the tedium out of formatting spreadsheet cells and categories
- Full control over spreadsheet text, grid, line weight and color

---

### FILE FORMAT

- ASCII (plain text) file format allows your custom scripts and applications to both read and write Quantrix spreadsheet files
- Compatibility with Lotus• Improv .imx and 1-2-3, with Microsoft• Excel 5.0 coming soon
- Import from and Export to user-defined text formats

---

### PRODUCT AVAILABILITY

- Available now for NEXTSTEP (all architectures)
- Available for OpenStep in conjunction with its release
- Technical support and training are available
- Site licensing available

---

### FOR MORE INFORMATION

- Call 1-800-366-2279 or +1-415-570-7736
- Send electronic mail to [quantrix@lighthouse.com](mailto:quantrix@lighthouse.com)
- Visit us on the World Wide Web at <http://www.lighthouse.com/>